

## Data sheet

Commercial Art.No.: 92.030.5253.1

Distributor GST18i3V 5P1 V SW

Distribution block GST18i3, 3 pole, 1 input, 5 outputs, without mounting option, 250 V, 20 A, colour of coding: black



|                    |               |
|--------------------|---------------|
| Commercial Art.No. | 92.030.5253.1 |
| EAN                | 4015573437258 |
| Order Unit         | 1             |

Certificates / Approvals



## Technical data

### General

|                                  |                                  |
|----------------------------------|----------------------------------|
| Rated current                    | 20 A                             |
| Rated voltage                    | 250 V                            |
| Rated impulse voltage            | 4 kV                             |
| Pollution degree                 | 2                                |
| Mechanical coding                | Code 1                           |
| Lockable                         | self-locking (unlocking by tool) |
| Color of coding/ contact carrier | black                            |
| Marking of poles                 | L, N, PE                         |

### Model

|                           |                |
|---------------------------|----------------|
| Number of inputs          | 1              |
| Number of outputs         | 5              |
| Type of fastening         | No             |
| Degree of protection (IP) | IP20           |
| Type of distributor       | HH-distributor |

### Material

|  |           |
|--|-----------|
| Housing material                             | Polyamide |
| halogen free                                 | yes       |
| Contact material                             | CuZn      |
| Fire load                                    | 0.12 kWh  |
| Insulation components continuous temperature | 100 °C    |

|                |            |
|----------------|------------|
| Surface finish | Tin-plated |
|----------------|------------|

#### Classification

|            |          |
|------------|----------|
| ECLASS 11  |          |
| ECLASS 8.1 | 27440603 |
| ETIM 7.0   | EC002567 |
| ETIM 6.0   | EC002567 |
| ETIM 5.0   | EC002567 |
| ETIM 4.0   | EC002567 |

#### Dimensions

|        |         |
|--------|---------|
| Length | 44 mm   |
| Width  | 32 mm   |
| Height | 52.5 mm |

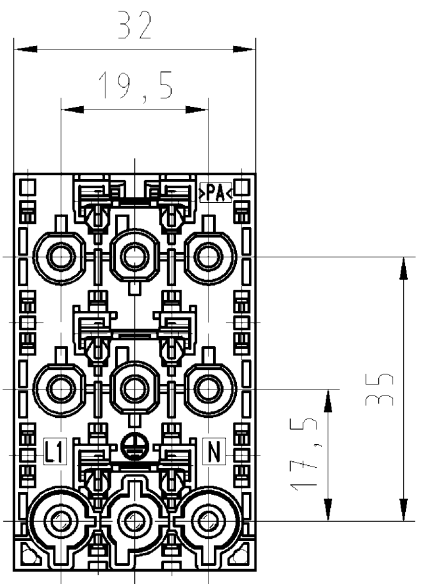
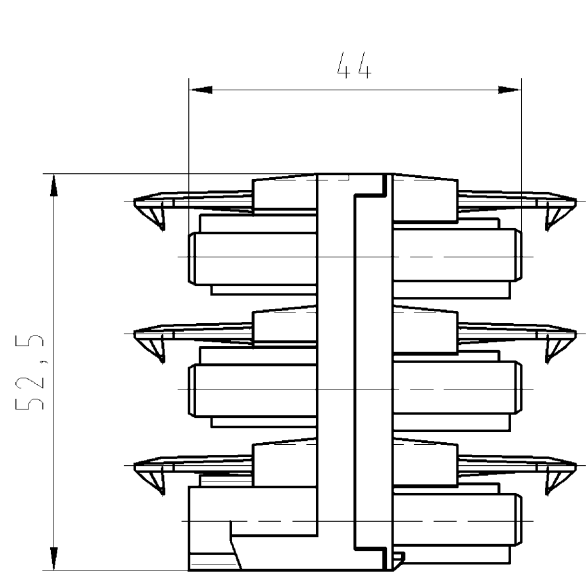
#### Product compliance

|                              |                    |
|------------------------------|--------------------|
| ROHS conformity status       | Compliant/Exempted |
| ROHS exceptions              | III-6(c)           |
| REACH-SVHC conformity status | Duty-To-Declare    |
| REACH-SVHC substances        | Lead               |
| REACH-SVHC CAS numbers       | 7439-92-1          |

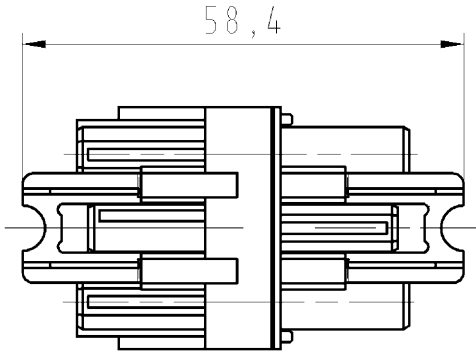
#### Accessories

| Commercial Art.No.: | Article-type description:         | Description:   |
|---------------------|-----------------------------------|--|
| 05.588.5753.0       | Lock GST18 VERTEILER WS           | Locking device for distributor GST18i3-5, retrofit part, white |
| 05.588.5753.1       | Locking slide GST18 VERTEILER SW  | Locking device for distributor GST18i3-5, retrofit part, black |
| 05.561.3653.0       | cover cap GST18i3VS B WS          | Cover piece for female GST18i3, white                          |
| 05.561.3653.1       | cover cap GST18i3VS B SW          | Cover piece for female GST18i3, black                          |
| 05.564.5353.0       | cover cap GST18i3/4/5 SW          | Cover piece 12 pole black for female parts GST18i3-6           |
| 05.564.5353.2       | cover cap GST18i3/4/5 WS          | Cover piece 12 pole white for female parts GST18i3-6           |
| 05.594.4250.0       | cover cap ST18/3B + GST18i3 ST WS |  |
| 05.594.4253.0       | cover cap ST18/3B + GST18i3 ST WS |  |

These dimensions will be especially checked at delivery  
 Only inspection dimensions  
 With /E marked dimensions are only valid for internal use



Diese Maße werden bei Abnahme besonders geprüft  
 Ausschließlich Prüfmaße  
 Mit /E gekennzeichnete Maße sind nur für interne Zwecke gültig



Weitere Daten siehe Katalog  
 further data see catalog

| Teilenummer/<br>part number | Typ/<br>type      | Farbe/<br>colour |
|-----------------------------|-------------------|------------------|
| 92.030.5253.0               | GST1813V 5P1 V WS | weiß/white       |
| 92.030.5253.1               | GST1813V 5P1 V SW | schwarz/black    |

Tolerierung Size ISO 14405(☐)/Tolerance system Size ISO 14405(☐).  
 (This ISO-standard describes the envelope principle. According to the envelope principle the deviations of form and parallelism are limited by the size tolerances).  
 ja/yes ☑ Stoffverbots- und Deklarationsliste nach UU-TQM-05/03 ist einzuhalten.  
 Conformity with Wieland document UU-TQM-05/03 (list of prohibited / declarable hazardous substances) to be declared!

Freitoleranz nach General tolerance CAD - Zeichnung, keine manuellen Änderungen CAD - drawing, no manual modifications allowed I.Verwendung: First Use: Blatt: 1 von 1 Sheet: 1 of 1

|   |                    |                            |          |          |                                 |       |
|---|--------------------|----------------------------|----------|----------|---------------------------------|-------|
| / | Werkstoff/Material | 2001                       | Tag/Date | Name     | Zeichnung Nr./Drawing No.       | Index |
|   |                    | gezeichnet<br>drawn        | 18.06.   | Bauer F. |                                 |       |
|   |                    | geprüft<br>checked         | -        | -        |                                 |       |
| / | Maßstab/Scale      | Normgepr.<br>Stand., check | -        | -        | Maße in mm/Dimensions are in mm |       |
| / | 1:1                |                            |          |          |                                 |       |

|                   |                               |                            |                 |                               |
|-------------------|-------------------------------|----------------------------|-----------------|-------------------------------|
| /                 | Vol.                          | mm <sup>3</sup> Oil./Surf. | mm <sup>2</sup> | Ersatz für/Replacement for: - |
| /                 | wieland                       |                            | Type            | Benennung/Tittle              |
| a                 | 17.06.2013/                   | Elektrische Verbindungen   | siehe Tabelle   | distribution block            |
| Index             | Datum / Blatt<br>Date / Sheet |                            |                 | VERTEILER                     |
| Änderung/Revision |                               | 250V AC 20A                |                 |                               |

Weitergabe sowie Vervielfältigung dieses Dokuments, Verwertung und Mitteilung seines Inhalts sind verboten, soweit nicht ausdrücklich gestattet.  
 The reproduction, distribution and utilization of this document as well as the communication of its contents to others without express authorization is prohibited.