

DETAILS

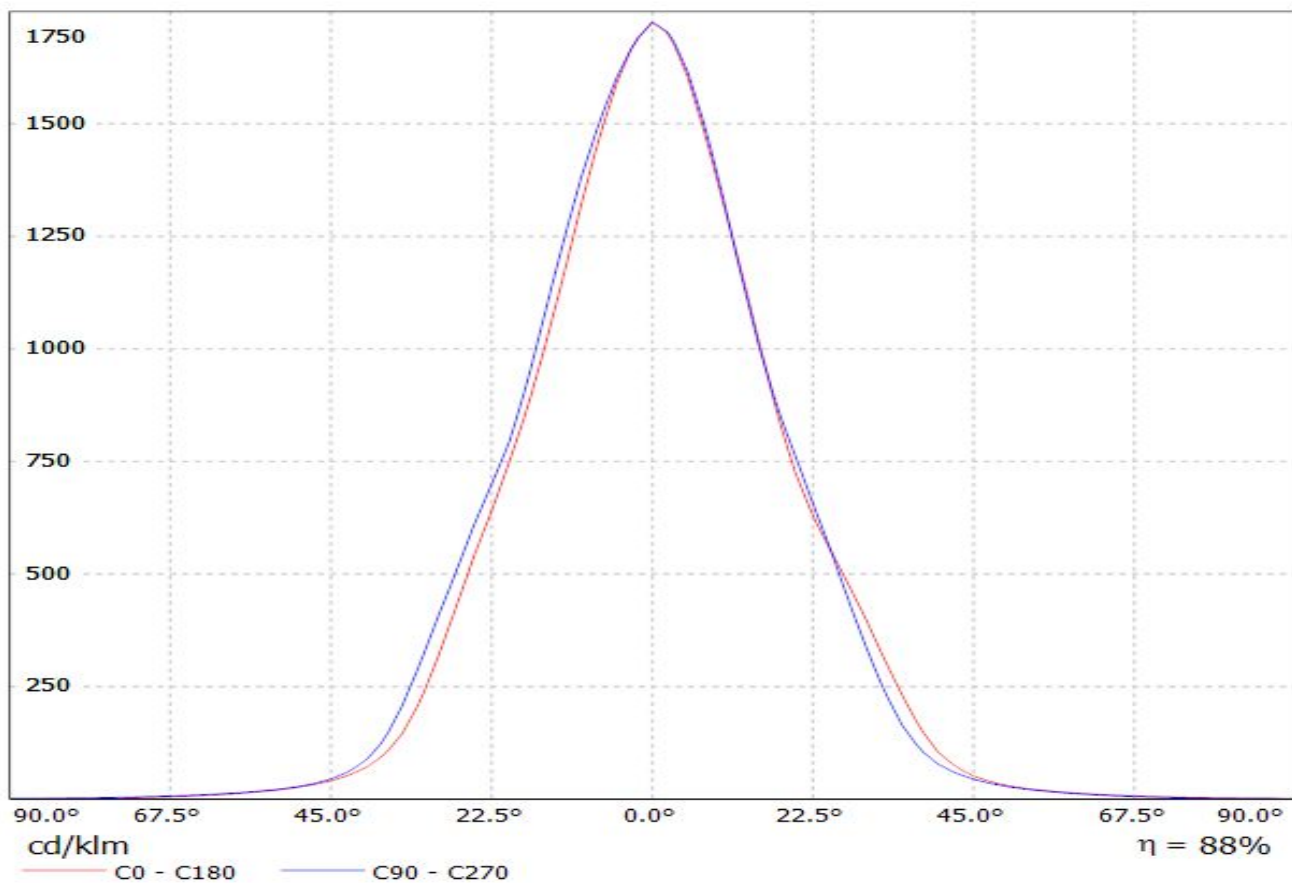
Product Number	FP11002_LISA2-W-PIN
Family	Lisa2
Type	Assembly
Color	black
Diameter	9,9 mm
Height	6,6 mm
Style	round
Optic Material	PMMA
Holder Material	
Fastening	glue, pin
Status	production ready
ROHS Compliant	Yes
Date Updated	15/04/2016



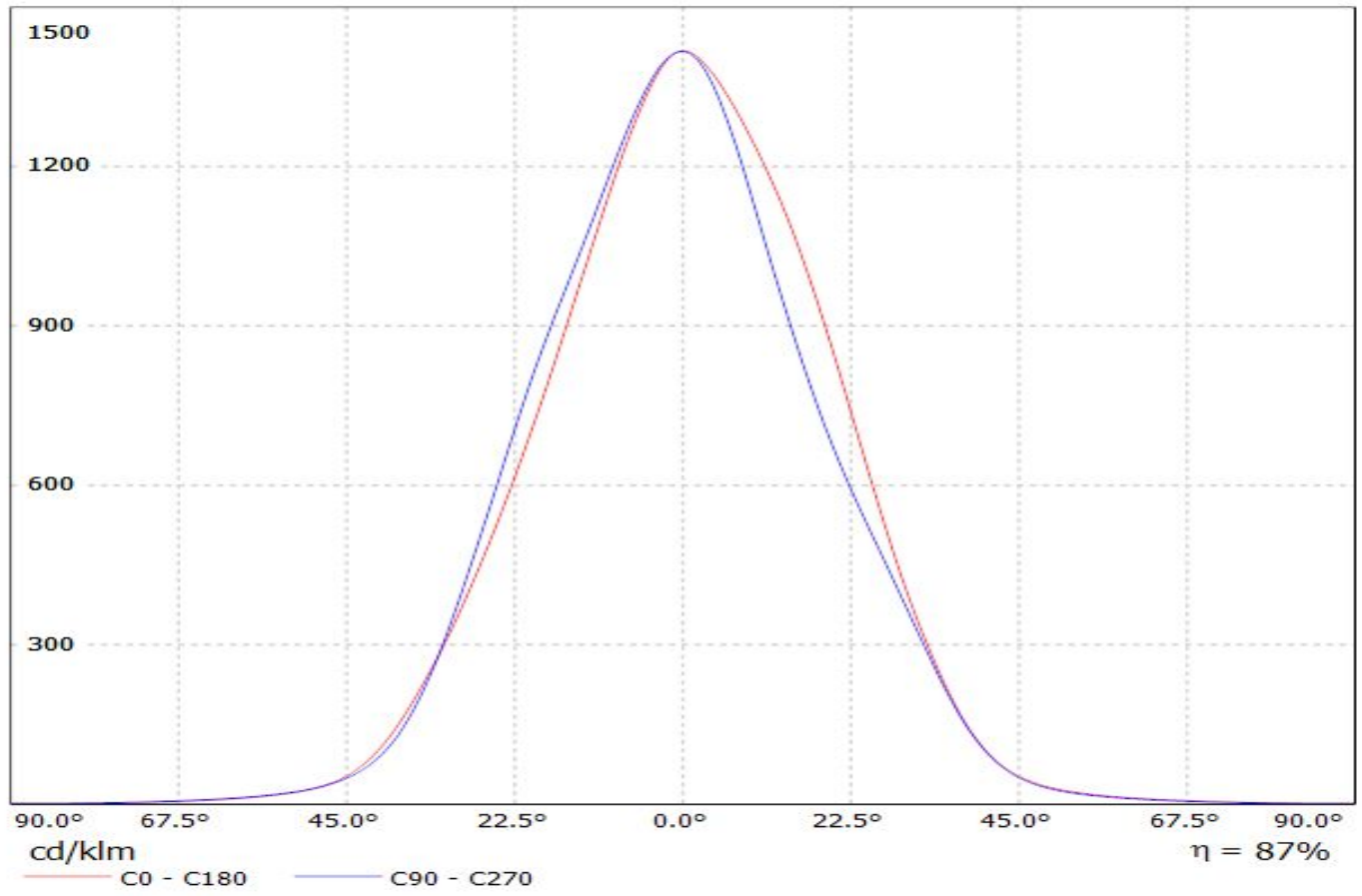
OPTICAL PROPERTIES

LED	Viewing	Light	Efficiency		Connector
	Angle	Beam	ciency	cd/lm	
Oslo SSL 80	36 deg	Wide	88 %	1.730	-
Oslo SSL 150	46 deg	Wide	90 %	2.000	-
Oslo Square EC	42 deg	Wide	89 %	1.460	-
SFH 4770S	sim: 36	Wide	sim: 96 %	-	-
Synios P2720 1 mm	sim: 27	Wide	sim: 93 %	sim: 2.870	-

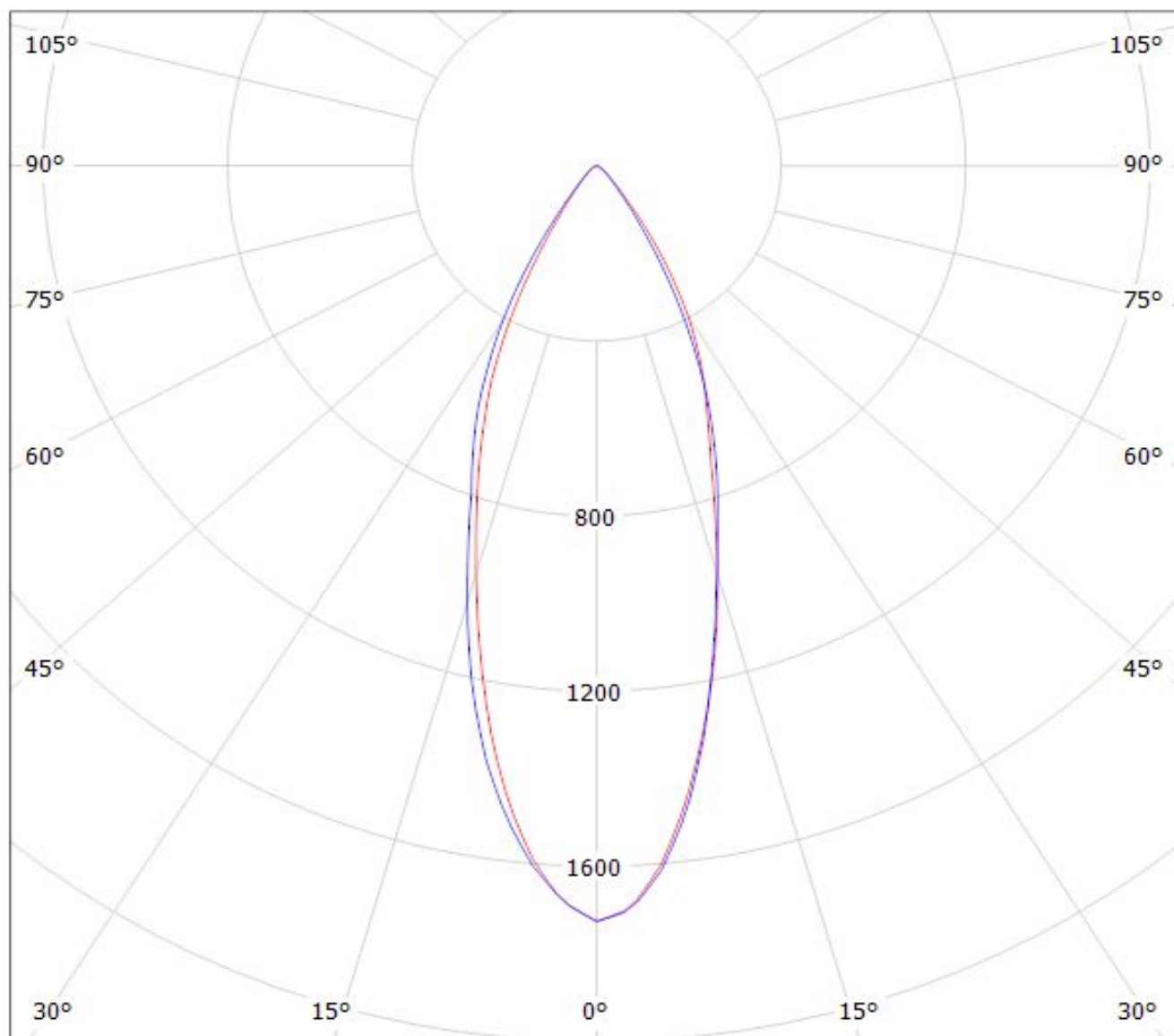
Luminaire: LEDiL Oy FP11002 & FP11082_LISA2-W_(SSL80) Eff.87.5%
Lamps: 1 x Oslon SSL80 (77.5072lm@250mA)



Luminaire: LEDiL Oy Lisa2-W-PIN/CLIP_(Oslon_Square_EC)
Lamps: 1 x Oslon Square EC CCT:3000K 79lm@250mA



Luminaire: LEDiL Oy FP11002 & FP11082_LISA2-W_(SSL80) Eff.87.5%
Lamps: 1 x Oslon SSL80 (77.5072lm@250mA)



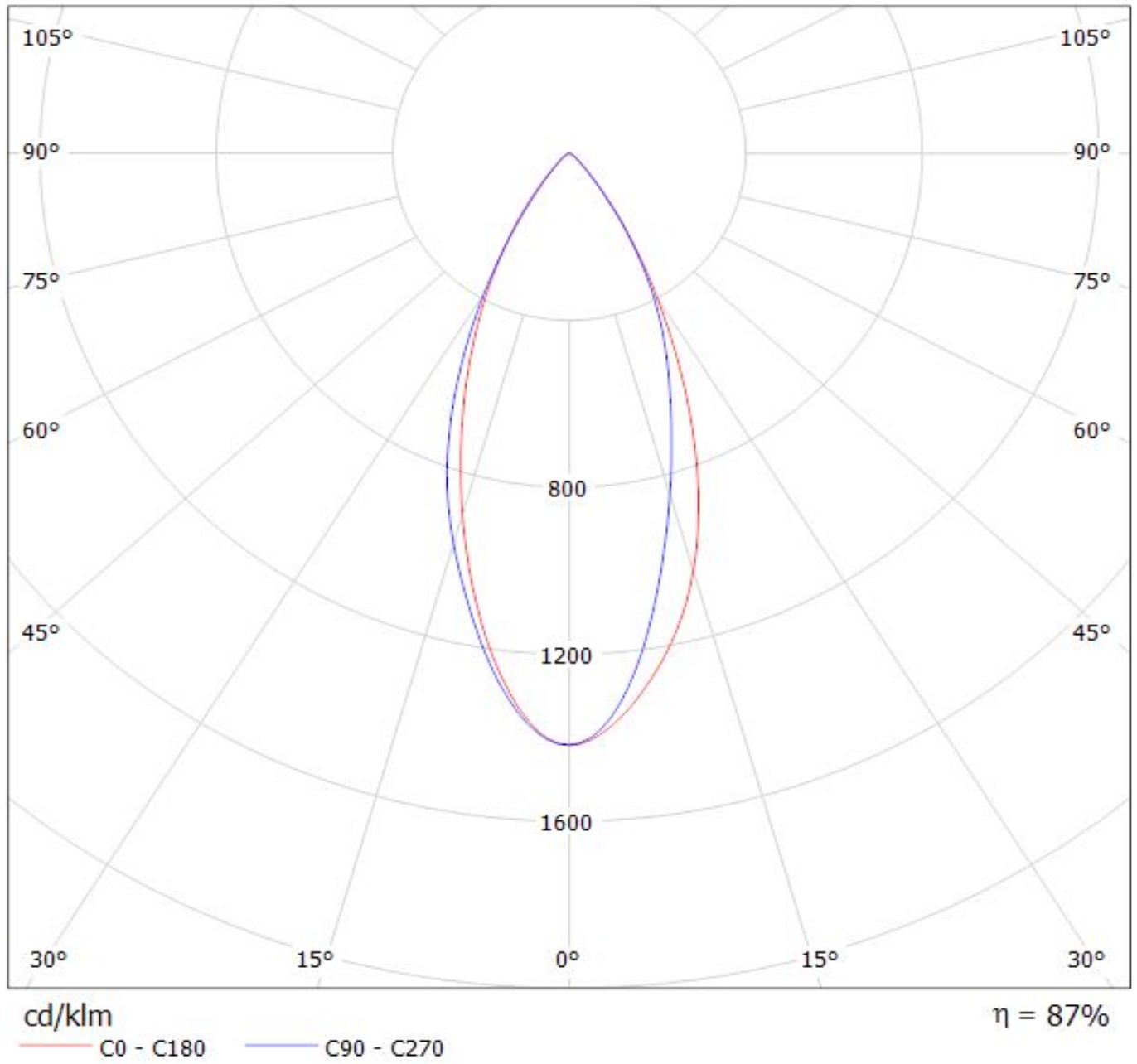
cd/klm

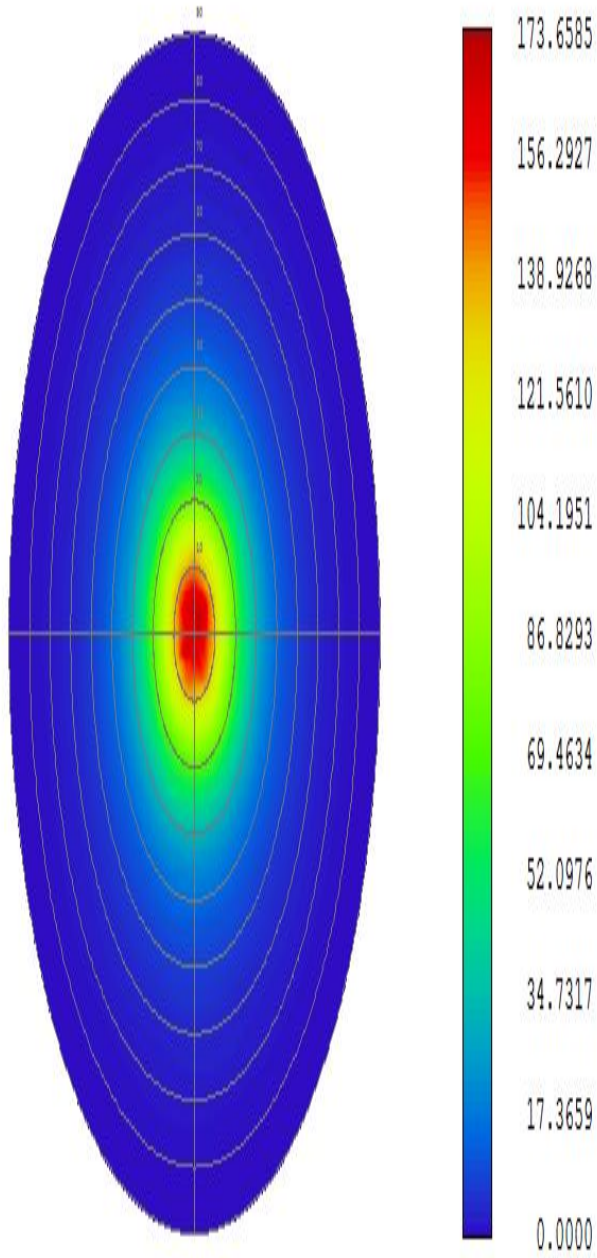
$\eta = 88\%$

— C0 - C180

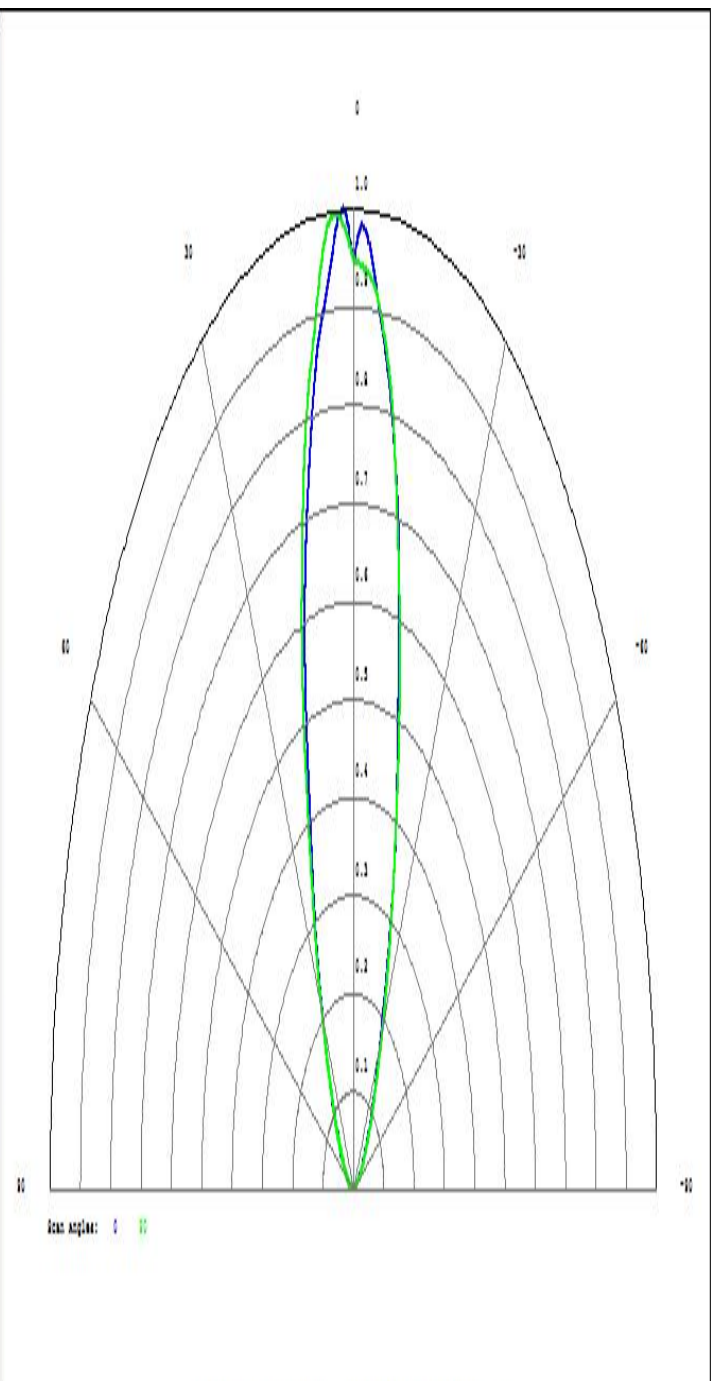
— C90 - C270

Luminaire: LEDiL Oy Lisa2-W-PIN/CLIP_(Oslon_Square_EC)
Lamps: 1 x Oslon Square EC CCT:3000K 79lm@250mA





Detector Image: Radiant Intensity



Detector Image: Radiant Intensity

NOTE: The typical divergence will be changed by different color, chip size and chip position tolerance. The typical total divergence is the full angle measured where the luminous intensity is half of the peak value.